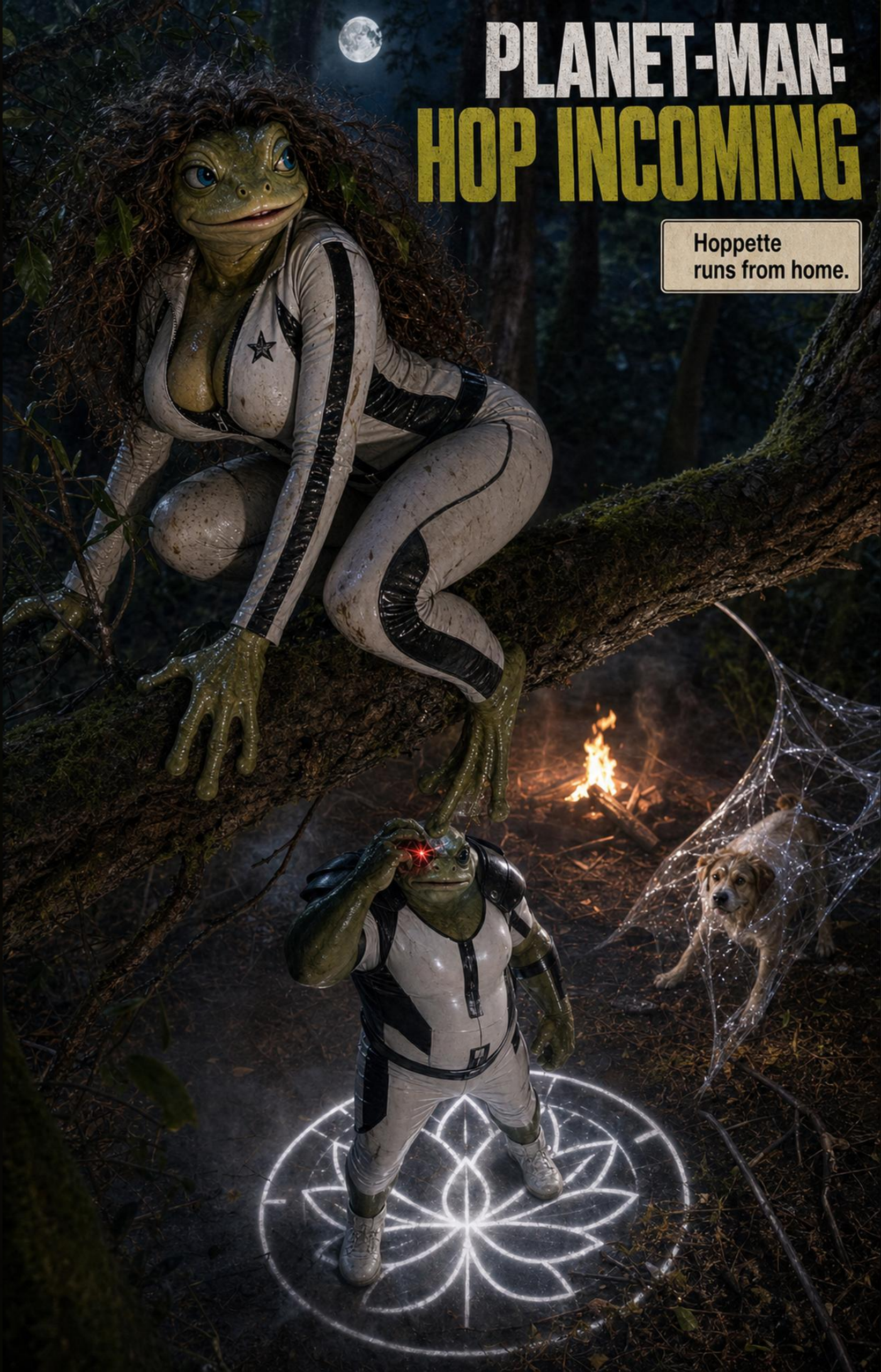


PLANET-MAN: HOP INCOMING

Hoppette
runs from home.



Hoppette kept
her fire small.



The forest belonged
to a world she
barely knew.

Looking for
home?



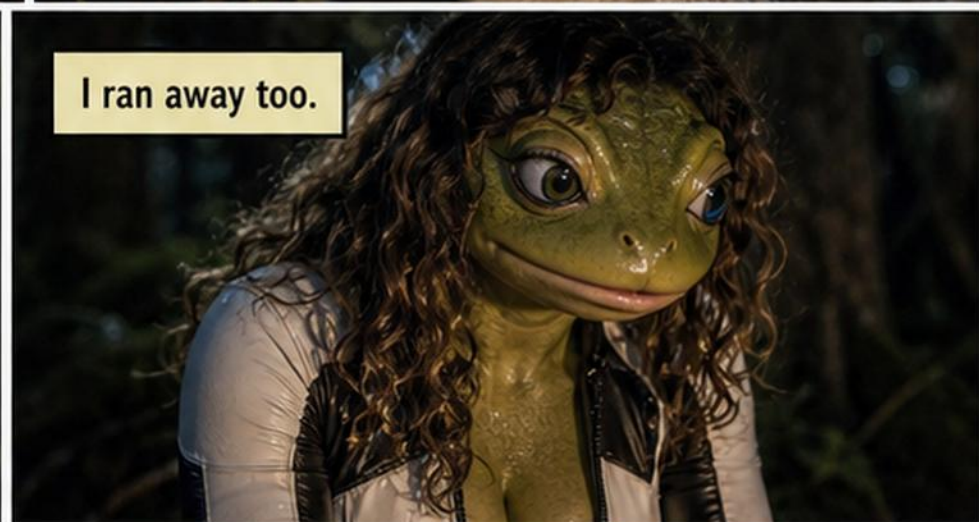
I ran away.



Talking dogs.
Of course.



I ran away too.



The suit warned her first.



Hoppette moved before fear caught up.



The dog only saw light.



The glyph opened.



Bruiser came through.



Then the barking started.



Bruiser did not chase the bark.



His tongue struck once.



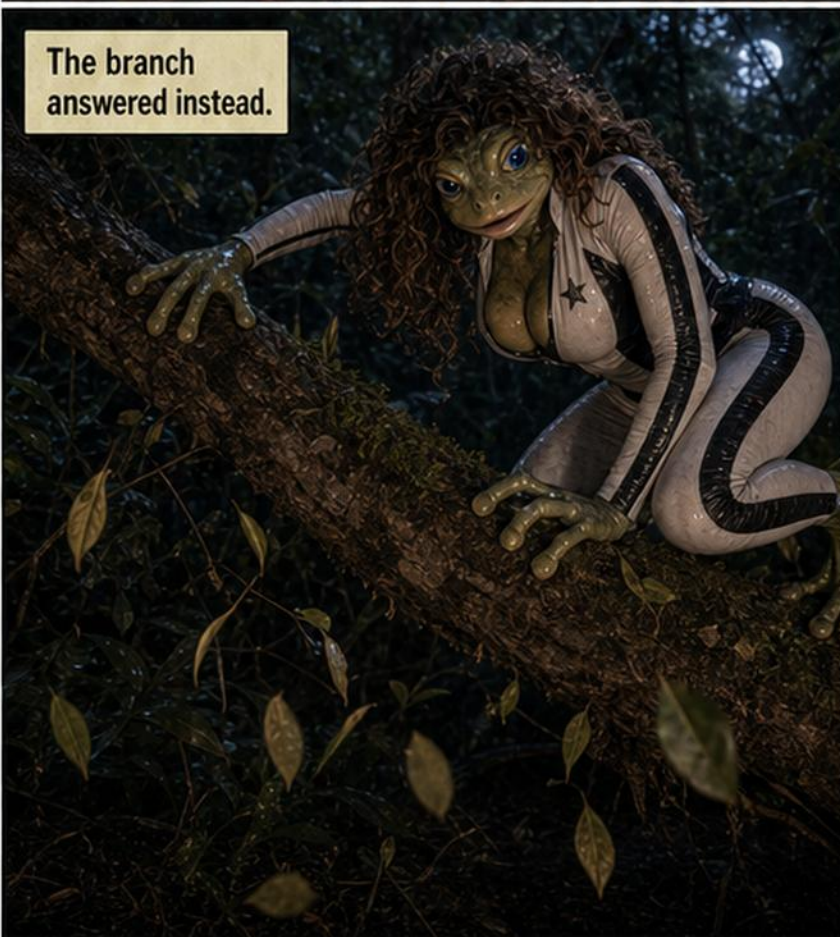
The mucus held.



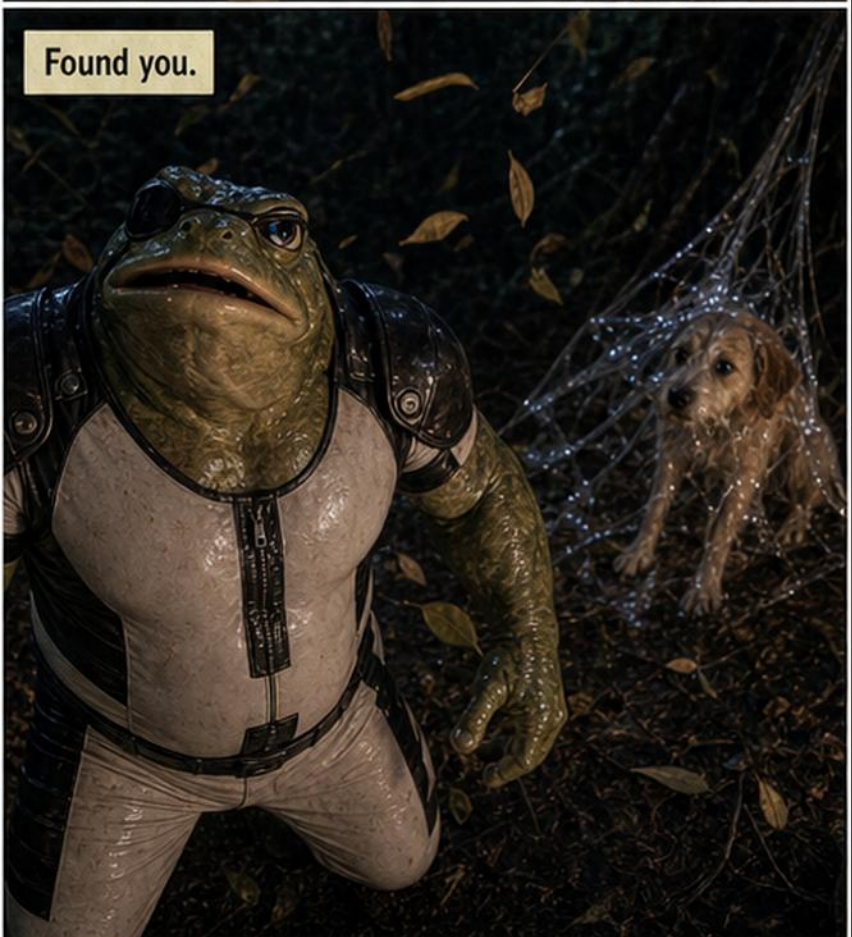
Hoppette almost jumped.



The branch answered instead.



Found you.



Hoppette ran
above the fire.



It is not
too late.



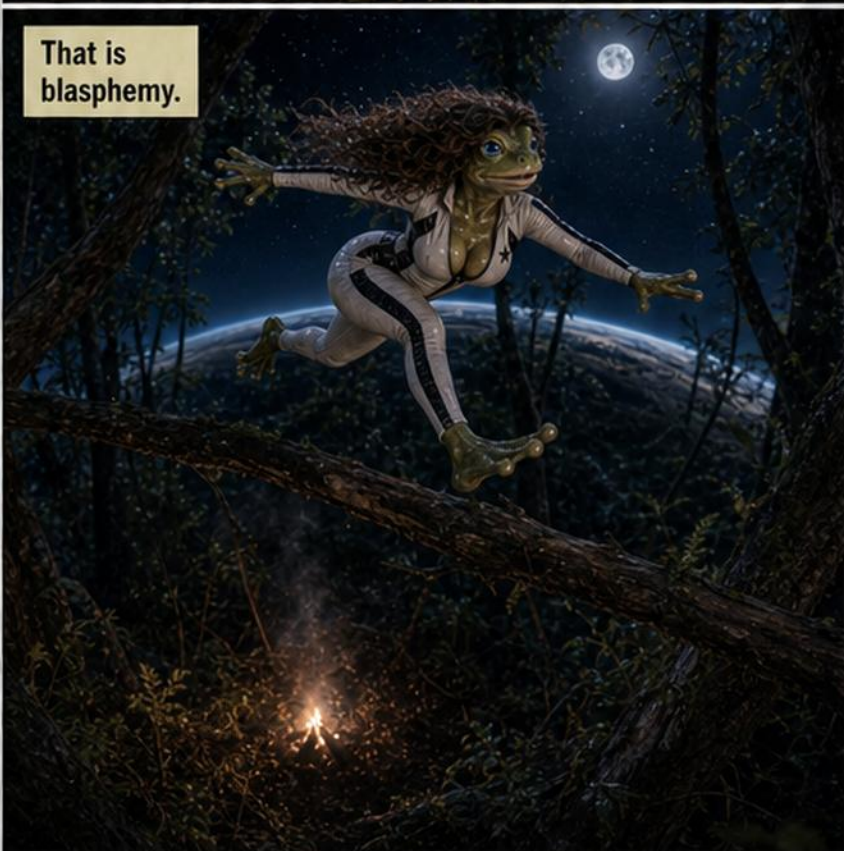
Stop the
blasphemy.



Our world
replaces gods.



That is
blasphemy.



You built
the hop suits.



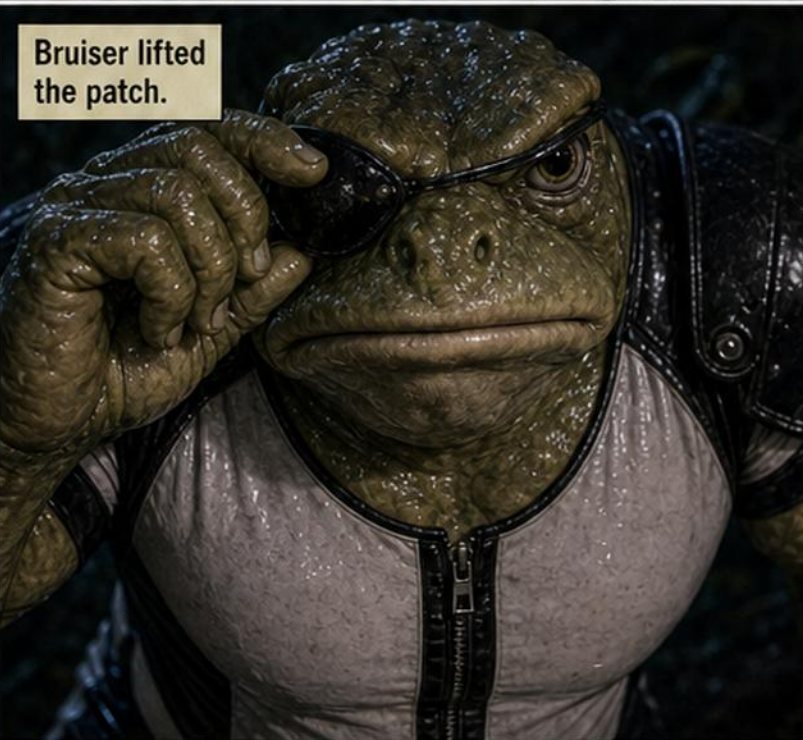
That was before.



Before the true god returned.



Bruiser lifted the patch.



Ruby light woke underneath.



The branch died first.



Hoppette had no landing.



Her tongue
found height.



The forest swung
beneath her.



Clever girl.



Bruiser was faster
than before.



The branches
thinned.



Moonlight
opened ahead.



No more trees.



Nowhere left to run.



There is one world.



You will never follow me there.



The glyph opened under her feet.



Ruby fire missed by inches.



Bruiser landed too late.



She cannot hide behind Planet-Man forever.

