

STORYVERSE

COMICS

ISSUE 1

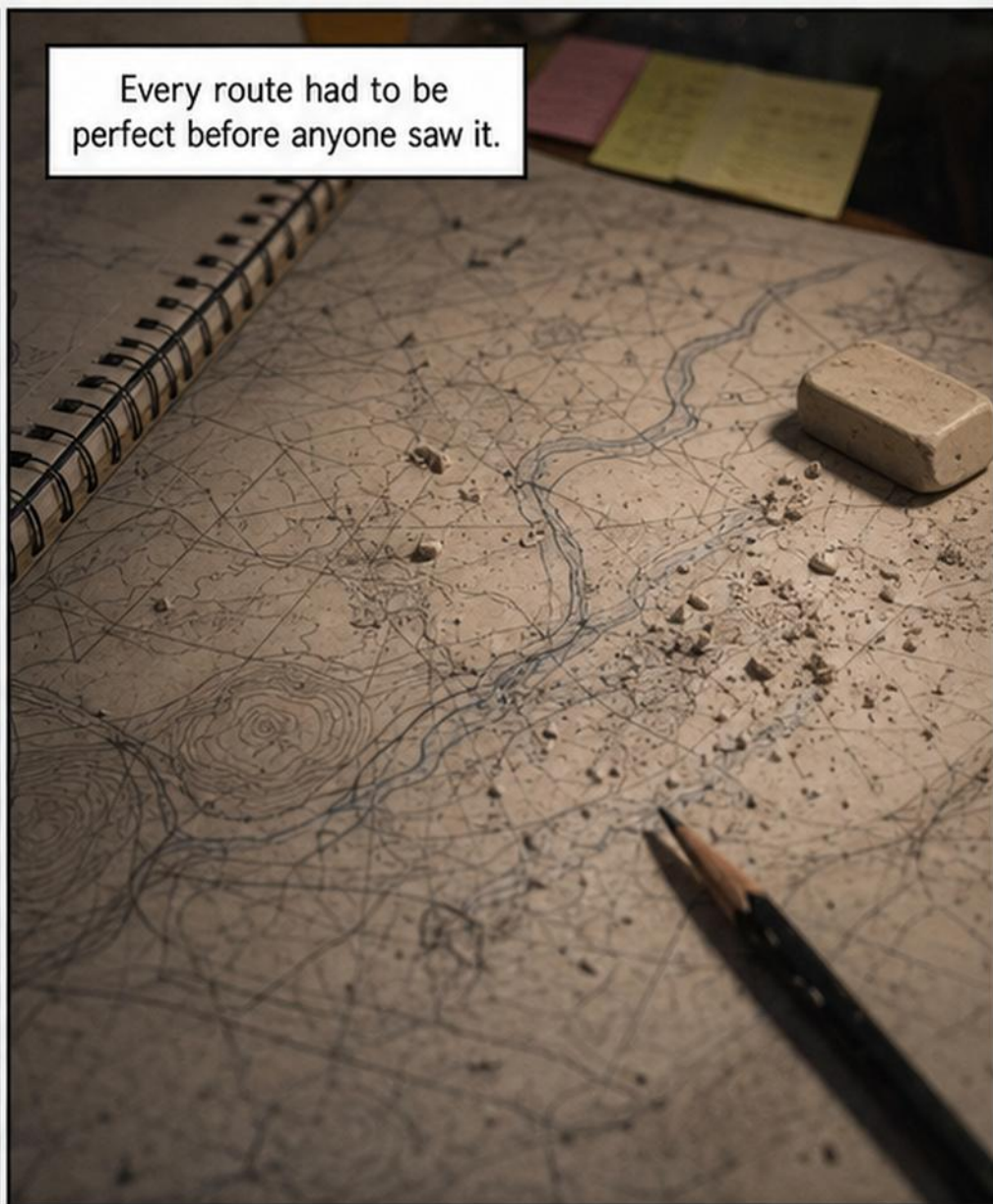
THE MAP THAT FEARED THE ENDING



Lena Ortiz could draw any road except the first one.



Every route had to be perfect before anyone saw it.



By midnight, the paper was almost gone.



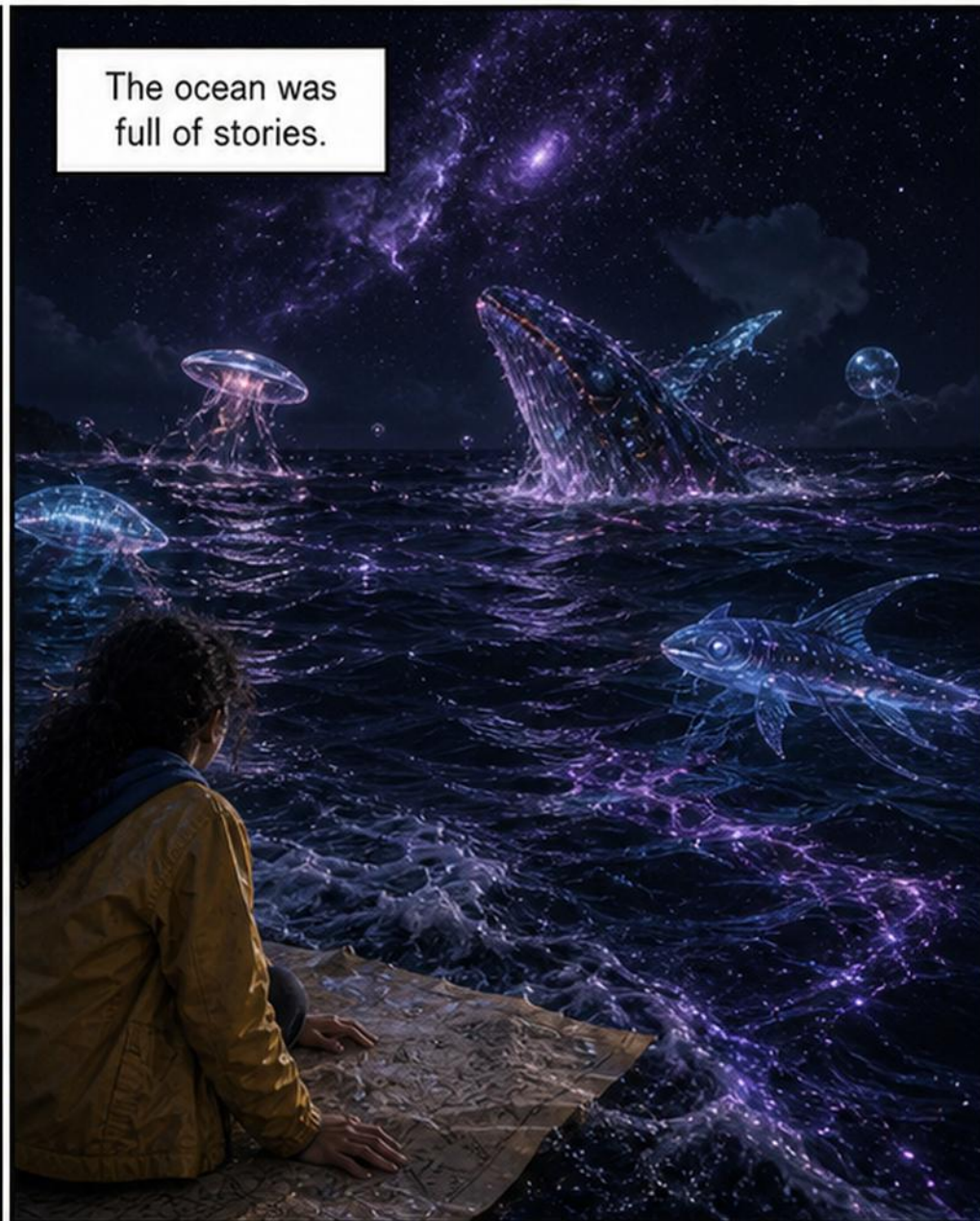
Sleep found her with the eraser still in her hand.



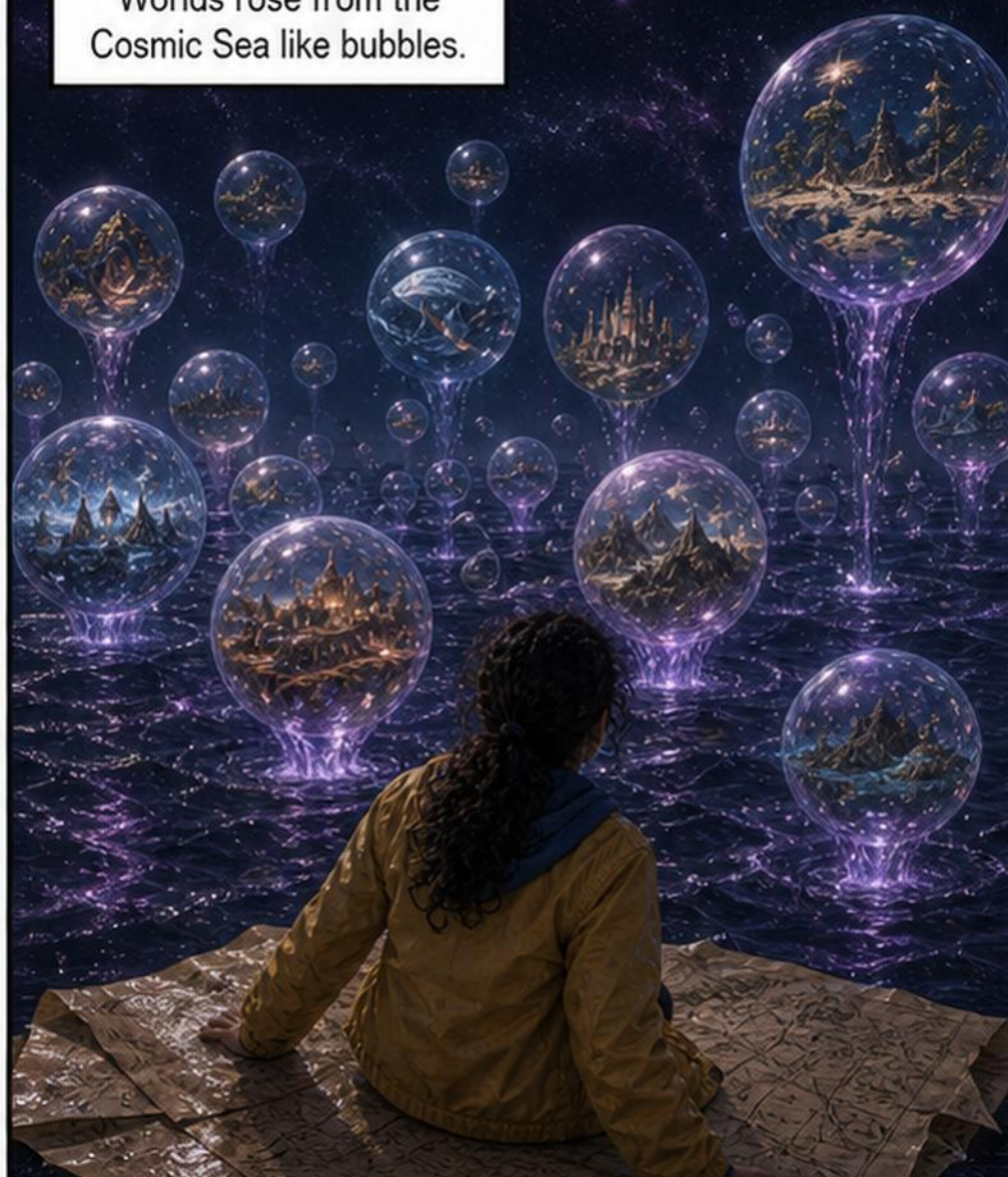
She woke to waves under the stars.



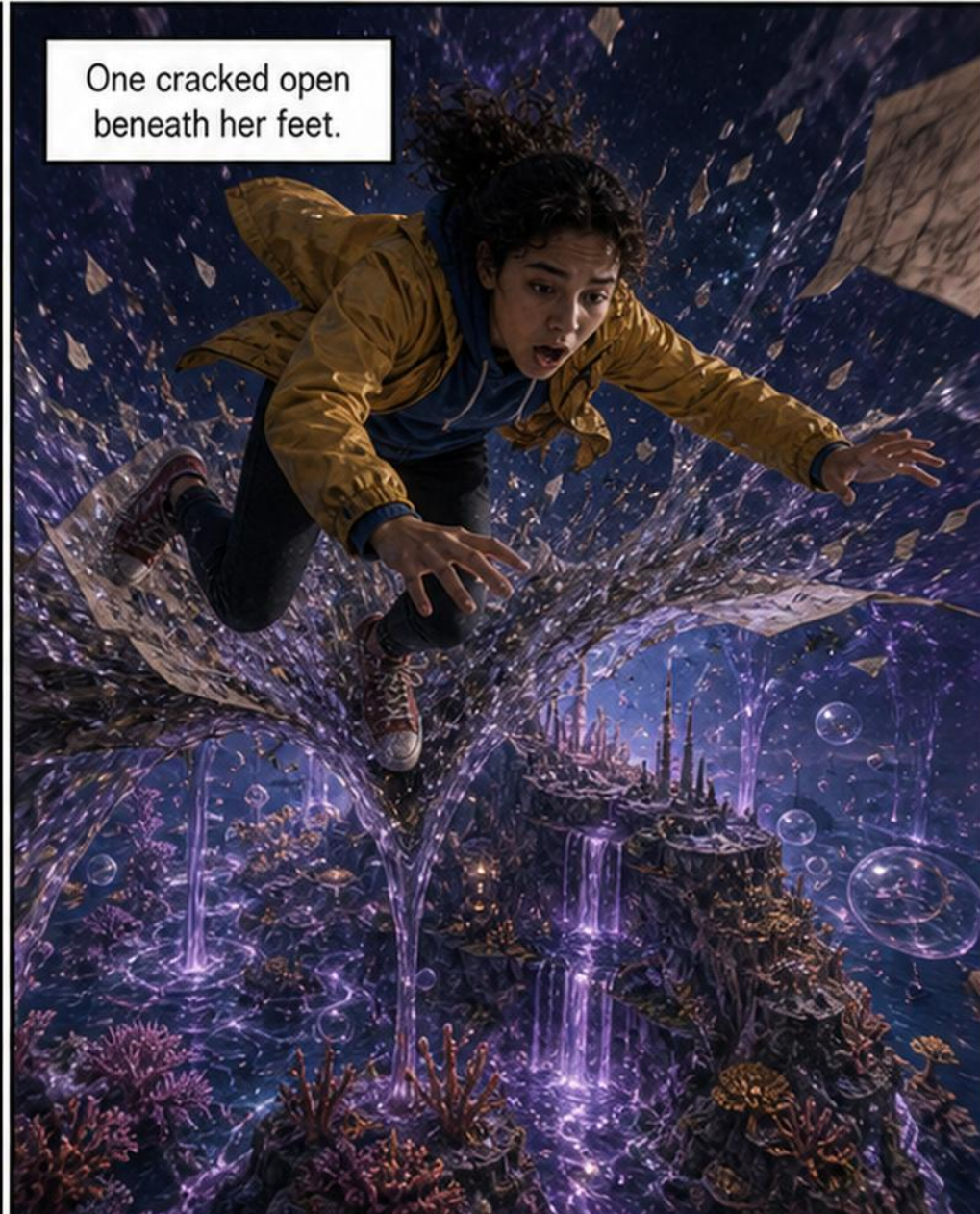
The ocean was full of stories.



Worlds rose from the Cosmic Sea like bubbles.



One cracked open beneath her feet.



Inkfall Reef
charted every path
a story might take.



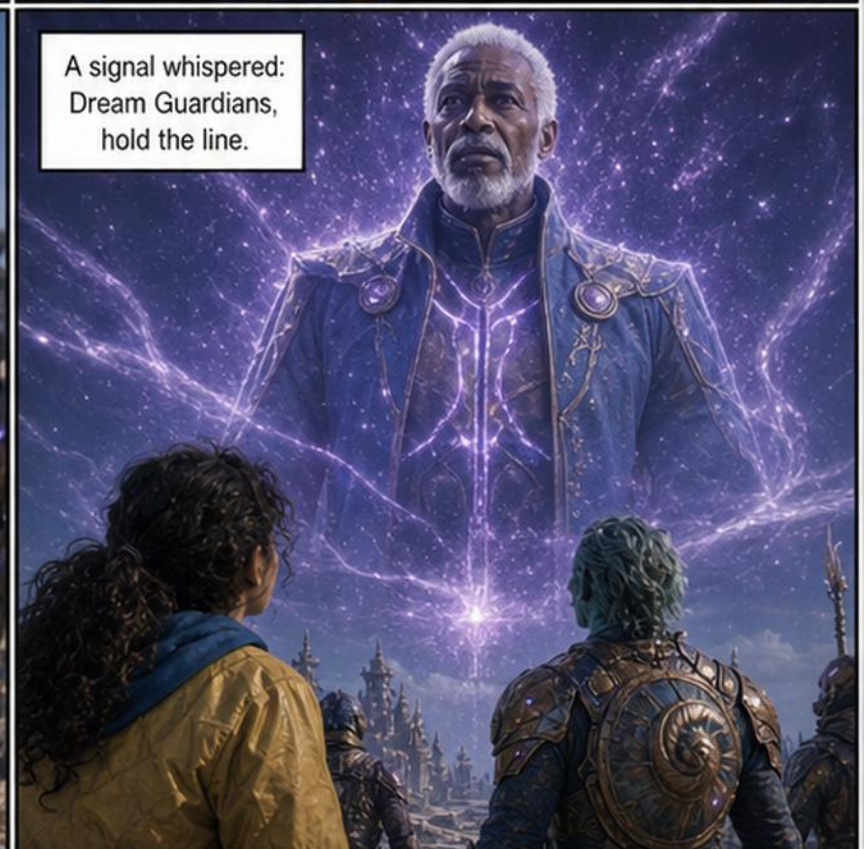
Something was
erasing the endings.



Captain Quill
reached her before
the fall did.



A signal whispered:
Dream Guardians,
hold the line.



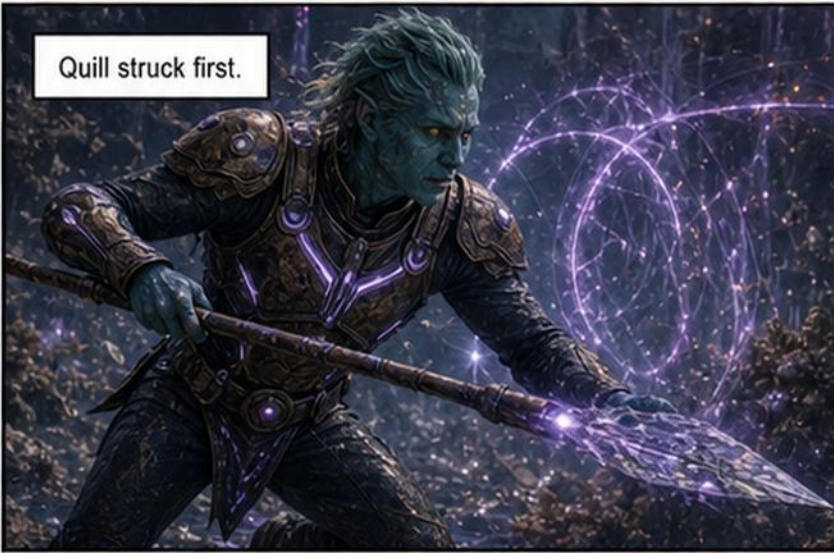
The Nightmare
smelled unfinished work.



It wore the face of
every mistake Lena feared.



Quill struck first.



The monster followed
fear faster than steel.



The path became paper under their feet.



Behind them, the Nightmare erased every step.



Quill called, Map us to safety!



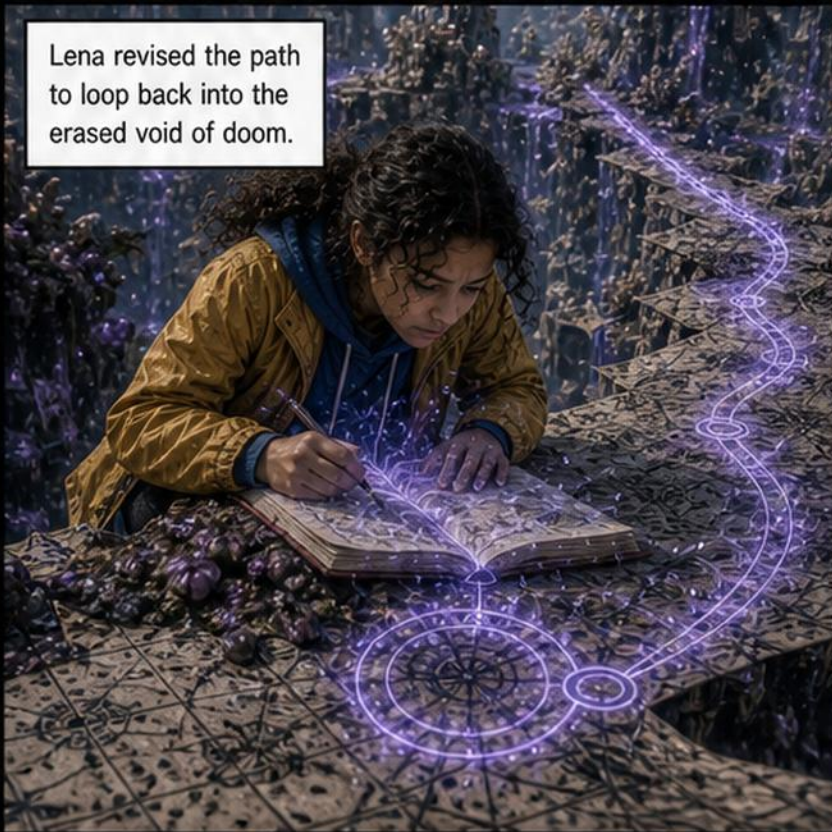
Lena froze. It has to be perfect.



Her need for perfection was feeding the nightmare.



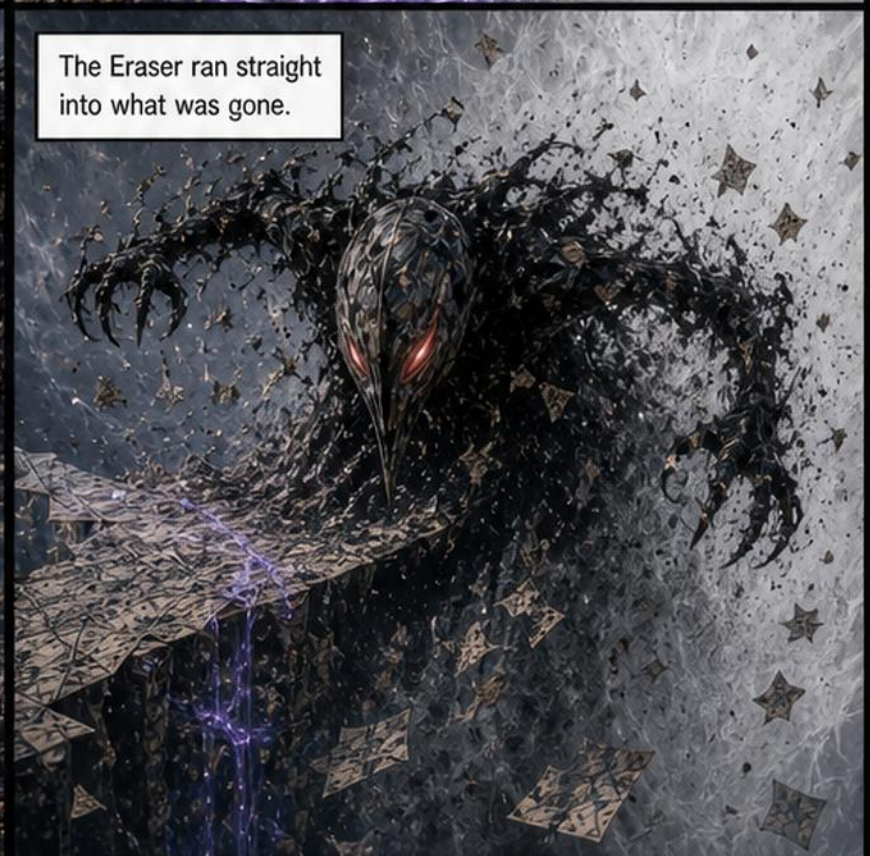
Lena revised the path to loop back into the erased void of doom.



She pulled Quill aside.



The Eraser ran straight into what was gone.



The unfinished route led exactly where it needed to.



The Eraser swallowed its own trap.



Inkfall Reef kept its endings.



Across the Storyverse, other worlds still called.

